

Community Choice Aggregation

Sponsored by:
Lincoln Green Energy Committee

Presenter:
C.J. Volpone



Introduction

Community Choice Warrant Article



Authorizes Selects to Start CCA Process



Engage Consultant



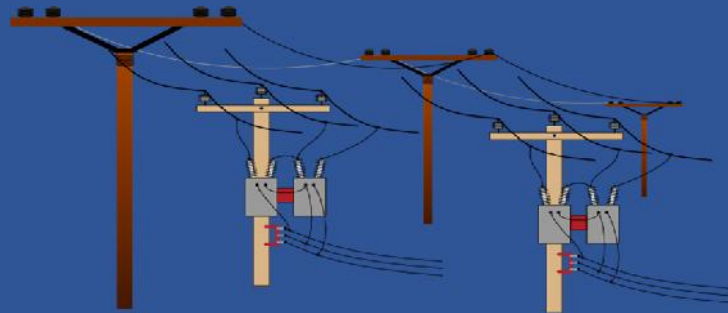
No Up-Front Commitment

Current Electricity Procurement

EVERSOURCE



Generation



Transmission

P.O. 90K 123, Anytown, USA

| ACCOUNT NUMBER | ACCOUNT NAME | RTE | CYCLE | SERVICE ADDRESS | | | | |
|----------------|-------------------|-----------------------|------------|-----------------|-------|--------|------------------|-----|
| 123456789 | XYZ Manufacturing | Large General Service | POS | 123 Main Street | | | | |
| SERVICE PERIOD | NO | BILL | NET BRANCH | UNIT | PSA | POWER | | |
| FROM | TO | DATE | TYPE | PROVIDER | CLASS | DEMAND | AMT/CH | |
| 06/15 | 06/15 | 06 | 0 | 60548 | 71345 | 000 | 1,440,000/40 LPT | PSN |

| | AMOUNT |
|---|-------------|
| CUSTOMER CHARGE | \$0.00 |
| ENERG CHARGE (1.440000E+06 KW) | \$87,000.00 |
| FUEL COST ADJUSTMENT (\$0.05) (1.440000E+06 KW) | \$9,200.00 |
| DEMAND CHARGE (40 KW) (\$2.00/KW) | \$8,000.00 |
| POWER FACTOR PENALTY (40 KW) (\$2.00/KW) | \$800.00 |
| SALESTAX - STATE (4%) | \$8,712.48 |
| SALESTAX - SPECIAL (0%) | \$0.00 |

Consumer Billing

Community Choice Aggregation

Lincoln CCA

EVERSOURCE



Consumer Choice



High Renewable



Medium Renewable



Base Level*



EVERSOURCE

* 5% above Mass Renewable Portfolio Standard (RPS)

CCA Cost Advantages

EVERSOURCE

- ➔ Bids Twice a Year
- ➔ Bids on Fixed Dates



CCA Cost Advantages



Lincoln Community Choice

- ★ Contract Length Varies*
- ★ Timed for Market Advantage*

*Rates and Contract Lengths vary depending on contract and market conditions.

Local Massachusetts CCA Programs



Brookline



Acton



Lexington



Arlington



Nantucket



Chelmsford

<https://www.mass.gov/service-details/municipal-aggregation>

Summary

Lincoln Community Choice

- ★ Greater Consumer Choice
- ★ Consumer Friendly
- ★ Renewable Options
- ★ Competitive Pricing
- ★ Price Stability



Questions?

